

Windows 7 Preview

Dennis Martin

President, [Demartek](#)

May 2009

© Copyright 2009 Demartek

Agenda

- **Taskbar Enhancements**
- **New Windows Experience Index**
- **Disk Volumes (Partitions)**
- **SSD differences**
- **Time for discussion and trying other features of interest to you**

Demo

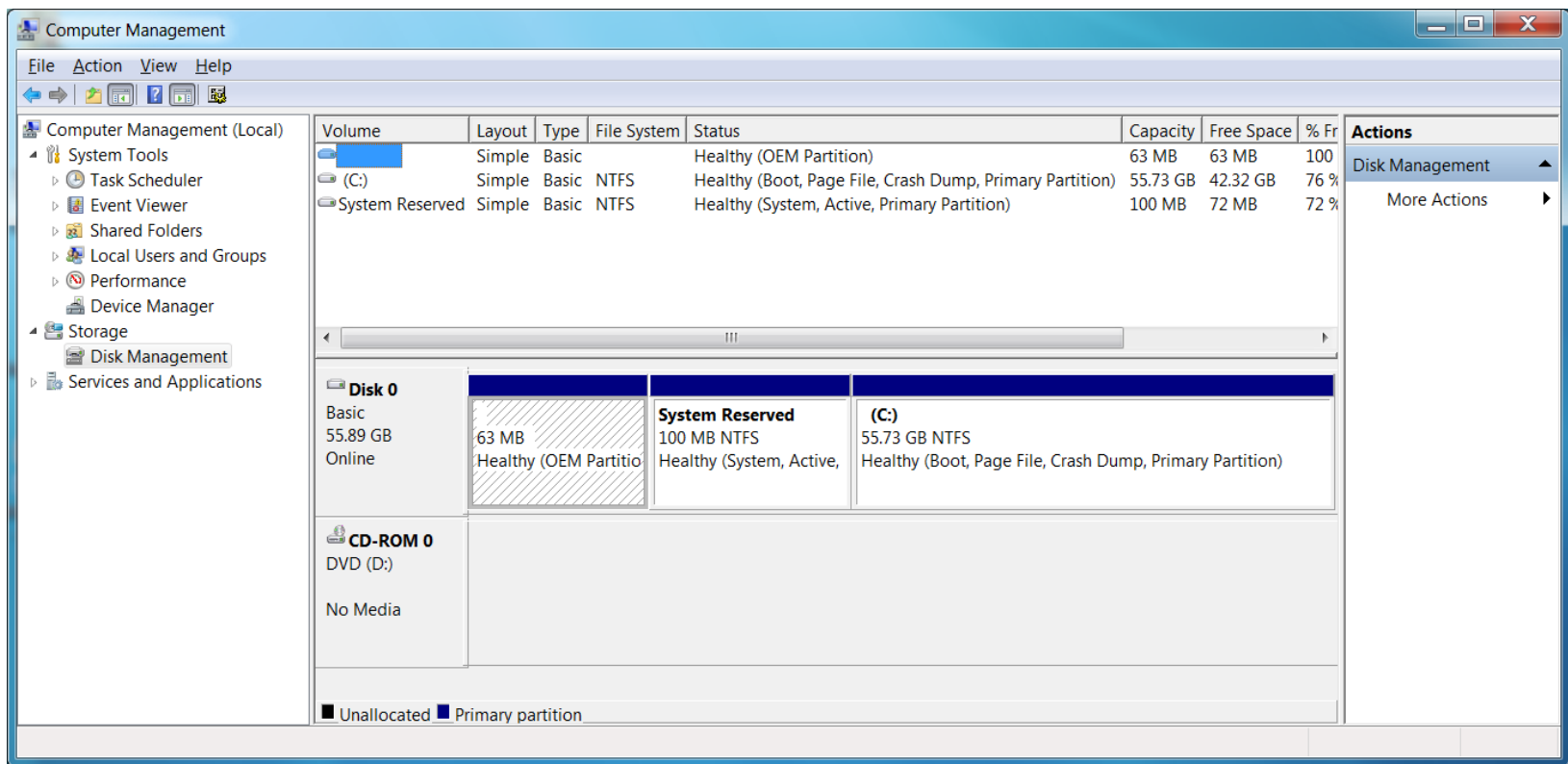
- **Taskbar changes**
- **Windows Experience Index**

Disk Volumes (Partitions)

- **Windows 7 and Windows Server 2008 R2 now have separate system volume and boot volume.**
 - System volume contains: Ntldr, boot.ini, Ntdetect.com
 - Boot volume contains operating system files
- **Reduces attack surface**

Disk Volumes (Partitions)

- Demo



SSD Differences

- SSDs are identified differently than HDDs
- For SSDs:
 - Set Defrag OFF
 - Support for “Trim” feature (occurs on delete)
 - Makes early garbage collection possible for fast write
 - Enhances wear-leveling by eliminating merge operations for deleted data blocks
 - Maximizes device unused area – more room for wear-leveling

SSD Differences (2)

- Disables Superfetch, ReadyBoost, boot and application launch pre-fetching
- Great Q&A for SSD:
<http://blogs.msdn.com/e7/archive/2009/05/05/support-and-q-a-for-solid-state-drives-and.aspx>

References

- Windows 7 Engineering team blog:
<http://blogs.msdn.com/e7/default.aspx>
- What's new in Windows 7 Release Candidate:
<http://www.microsoft.com/downloads/details.aspx?familyid=FB3982F1-D21E-4DDA-B301-44DD402CC653&displaylang=en>

Free Learning Courses

- What's New in Windows 7 for Consumers
<https://www.microsoftelearning.com/eLearning/courseDetail.aspx?courseId=118211&tab=overview>
- What's New in Windows 7 for IT Professionals
<https://www.microsoftelearning.com/eLearning/courseDetail.aspx?courseId=117957&tab=overview>
- What's New in Windows 7 for Information Workers
<https://www.microsoftelearning.com/eLearning/courseDetail.aspx?courseId=117183&tab=overview>

Contact me

Dennis Martin, President

Demartek

(303) 940-7575

dennis@demartek.com

www.linkedin.com/in/dennismartin

<http://twitter.com/demartek>